

22 JANUARY 2024

# TRAVEL ITINERARY

BLACK STAR SQUARE



## WHAT'S INSIDE?

DETAILED DAILY ITINERARY

TRAVEL BUDGET

WHAT'S INCLUDED

TERMS & CONDITIONS

TOUR CONFIRMATION FORM

tourpedia  
travel

# TRAVEL ITINERARY

ALTON HERITAGE PILGRIMAGE  
SPECIALLY CURATED FOR SHEILA GOINS



- **TRAVEL DATES:** October 14 - October 25 2025
- **COUNTRIES TO EXPLORE:** Ghana
- **NUMBER OF TRAVELERS:** Minimum 10 - Maximum 25
- **ACCOMMODATION: BESPOKE OPTION - 5 Star, 4 Star & Boutique Hotels & Resorts**



## DAY 1 DEPARTURE

OCTOBER 14

Depart the USA to Accra on Delta Airlines connecting through JFK airport in New York. Exact flight details to be determined.

## DAY 2 ARRIVAL - AKWAABA

OCTOBER 15

Arrive in Accra at the Kotoka International Airport. Meet & greet and transfer to hotel. In the evening, visit a local restaurant for a traditional Ghanaian dinner. Overnight at hotel in Accra. (D)



## DAY 3 ACCRA CITY FOOD TOUR



OCTOBER 16

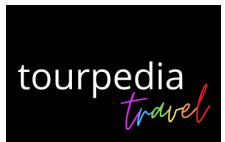
Eat your way through Accra on this local food tour which blends history, culture, art and cuisine of Ghana. Visit the bustling open air Makola market which is one of the largest in West Africa! Dive into the history and culture of old Accra as you walk through Jamestown - Ghana's oldest suburb set on the coast, and boasting of a fascinating history and vibrant local community. Observe the townspeople as they go about their daily activities, and watch how the women prepare local delicacies like kenkey & the spicy hot sauce- shitor.

Afterwards, enjoy of a variety of Ghanaian lunch dishes ranging from soups, starch based staples & a variety of meat and fish accompaniments. Next, visit the National museum and some historical sites and monuments like the Independence Arch and Black Star Square. No food tour is complete without a sweet finish! Sample an array of local deserts and beautifully hand crafted chocolate made from cocoa grown, harvested, prepared and packaged in Ghana. After shopping and dessert, taste some street snacks and return to your hotel for the night (B, L)



# TRAVEL ITINERARY

ALTON HERITAGE PILGRIMAGE  
SPECIALLY CURATED FOR SHEILA GOINS



## DAY 4

### ACCRA - BESEASE - KUMASI CITY TOUR

OCTOBER 17

After breakfast, begin your journey from Accra to Kumasi, the seat of the Ashanti Empire, to explore the legends of the famous Ashantis, whose legacies are still evident today. En route, stop at the Besease Shrine- a world heritage site, it is a traditional fetish shrine near the town of Ejisu. Each of these shrines is a home for a particular spirit, called obosom that mediates between mortals and the supreme god Nyame. Behold the unique architecture and experience the mode of ancestral worship to the ancient gods.



Upon arrival in Kumasi, visit the Manhyia Palace Museum to obtain firsthand information on the legacies of the Ashanti kingdom. A regal history that dates back to 1700 is told with relics and artefacts. Enjoy a ride through the city with monuments dedicated to the memory of great Ashanti people.



End the day's tour at the National Cultural Center which features the Prempeh II Jubilee Museum and various studios of the brass makers, potters and batik makers. Afterwards, return to your hotel in Kumasi for the night. (B, D)

## DAY 5

### CRAFTSMEN OF THE ANCIENT ASHANTI KINGDOM



OCTOBER 18

Devote this day to visiting the three famous Ashanti craft villages. After breakfast, depart for the wood carvers' village, the home of Adinkra cloth, and the Kente weaving village. You will have an opportunity to see firsthand how African crafts are made and to buy directly from the artisans who make them. Overnight in Kumasi. (B, D)

## DAY 6

### SLAVE RIVER & CAPE COAST CASTLE

OCTOBER 19

Check out of your hotel and drive through the forest zone to Cape Coast. En route, stop at Assin Manso, the site of "Donkor Nsuo", the former Slave River and market, the final transit point for a large number of enslaved Africans. This is the final resting place for two ancestors whose mortal remains were returned from the USA and Jamaica and re-interred there.

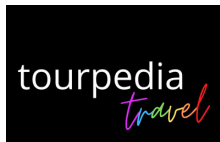


The impact of the slave trade which took place centuries ago is still felt beyond the shores of Africa today. Visit the Cape Coast Castle built by the Swedes in 1653 which was later taken over by the British. This castle houses the West African Historical Museum established by the Smithsonian Institute in collaboration with the Ghanaian Government in 1994. The colorful harbor nestled below, full of canoes preparing to go to sea offers one of West Africa's best photo opportunities. Overnight in Cape Coast. (B, D)



# TRAVEL ITINERARY

ALTON HERITAGE PILGRIMAGE  
SPECIALLY CURATED FOR SHEILA GOINS



## DAY 7

KAKUM NATIONAL PARK



OCTOBER 20

After breakfast, check out of your hotel and set off for an adventure to the Kakum National Park, one of West Africa's surviving tropical rain forests. Extending over 360sq km, Kakum is the home to over 40 large mammals and 400 bird species as well as many species of butterflies, flora and fauna. The most popular attraction is the Canopy walkway which is made up of seven bridges extending 330m, hanging 100 feet above the forest floor.



The rain forest below the canopy is home to wildlife like the African forest elephant, forest buffaloes, antelopes, monitor lizards and many other faunae. The park is child-friendly and also houses a smaller children's park with a mini canopy walkway, swings and play area. Afterwards, embark on your return journey to Accra, where you will spend the rest of the day at leisure.

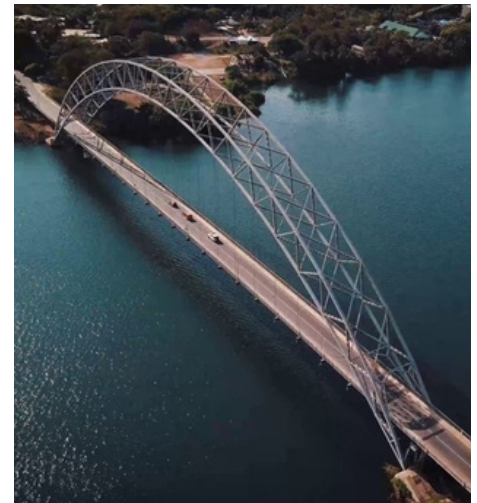
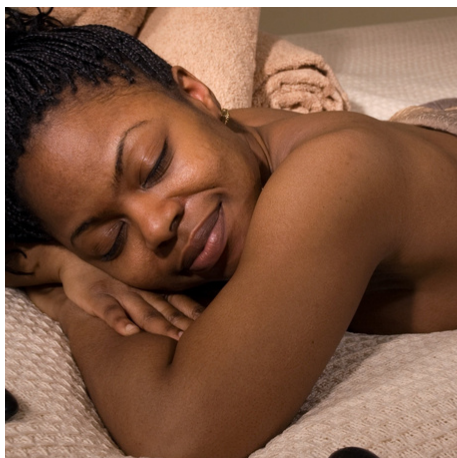
Overnight at your hotel in Accra. (B, D)

## DAY 8

DAY AT LEISURE

OCTOBER 21

Today will be a day of leisure. After breakfast, take a walk on the beach or lounge by the pool. The hotel has many amenities to explore including a spa, pool and a gym. Use this day to catch up on some rest or you can choose to do some exploring on your own! Overnight at hotel in Accra. \*Guide and driver are not available on this day. (B)



After the ceremony, join in the celebration and cultural display of singing, drumming and dancing with your new clansmen! Wrap up your visit with a leisurely boat ride around a small island on the Volta River where you will get to see the famous landmark- The Adomi Bridge. Afterwards, continue to a resort in Akosombo for the night. (B, D)

## DAY 9

VILLAGE EXPERIENCE & BOAT RIDE

OCTOBER 22

After breakfast, check out of your hotel and depart for the Volta region to visit a small village located along the bank of the Volta river. Upon arrival, be warmly welcomed with singing, drumming and dancing by the locals. A simple naming ceremony which is a pillar of Ghanaian cultural heritage, will follow. You will be adopted as a member of the village and given a Ghanaian name, symbolizing your acceptance in the community.



## DAY 10

DRUM & DANCE SESSION

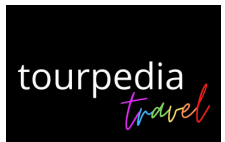


OCTOBER 23

After breakfast, attend a private drum & dance session. This workshop explores traditional Ghanaian dance through performance modes of drumming and singing, within its cultural context. Come prepared to move and learn a traditional dance! After the drumming and dancing session, stay at the resort for leisure, dinner and overnight. (B, D)

# TRAVEL ITINERARY

ALTON HERITAGE PILGRIMAGE  
SPECIALLY CURATED FOR SHEILA GOINS



## DAY 11

### REST & DEPARTURE

OCTOBER 24

After a leisurely breakfast, use this morning as a time of rest before you check out of the resort and depart to Accra for the journey back home. Your last stop before the airport will be at a deluxe beach club for an early dinner. Feel the ocean breeze and hear the crashing sounds of the waves as you enjoy a delicious meal before departure! Next, head to the airport to catch your flight back to the USA. (B)



“

OYI WALA DON -  
MEANS THANK YOU IN  
GA WHICH IS MAINLY  
SPOKEN BY THE  
INHABITANTS OF THE  
GREATER ACCRA  
REGION OF GHANA



## DAY 12

### ARRIVAL IN THE U.S.A

OCTOBER 25

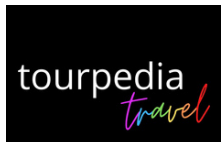
Welcome back to the U.S.A! After an exciting week of immersive experiences that celebrated and displayed the rich Ghanaian culture through travel, arrive in New York (JFK) on Delta Airlines around 6:35am and catch your connecting flight to your final destination in the States. (Exact flight details to be determined). May the memories from this trip last you a lifetime!



- END OF ITINERARY -

The itinerary is subject to adjustments to maximize the experience and/or due to other circumstances beyond our control.

# TRAVEL BUDGET



ALTON HERITAGE PILGRIMAGE  
SPECIALLY CURATED FOR SHEILA GOINS

- **TRAVEL DATES:** October 14 - October 25 2025
- **COUNTRIES TO EXPLORE:** Ghana
- **NUMBER OF TRAVELERS:** Minimum 10 - Maximum 25
- **ACCOMMODATION: BESPOKE OPTION - 5 Star, 4 Star & Boutique Hotels & Resorts**



## BESPOKE OPTION

PRICE PER PERSON

**\$3,955**

\*Based on 10 - 15 travelers

\*\*Pricing based on double occupancy

## BESPOKE OPTION

PRICE PER PERSON

**\$3,814**

\*Based on 16 - 20 travelers

\*\*Pricing based on double occupancy

## BESPOKE OPTION

PRICE PER PERSON

**\$3,700**

\*Based on 21 - 25 travelers

\*\*Pricing based on double occupancy

### HOTELS:

LABADI BEACH HOTEL - ACCRA (4 NIGHTS)  
IKES CULTURAL VILLAGE - KUMASI (2 NIGHTS)  
RIDGE ROYAL HOTEL - CAPE COAST (1 NIGHT)  
BRIDGEVIEW RESORT - AKOSOMBO (2 NIGHTS)

**SINGLE SUPPLEMENT - \$907**

# WHAT'S INCLUDED...



- Chauffeured ground transportation in an air conditioned vehicle
- Bottled water on the bus
- Airport transfers - Group arrival and departure
- Private tour guide while on tour
- All attraction, site and entry fees
- Site guides at museums and monuments
- Traveler support while on tour
- Accommodation based on the selected package
- Breakfast Daily from Day 2 - Day 11
- Lunch during Food Tour (Day 3)
- Dinner on Day 2, 4, 5, 6, 7, 9, and 10 (7 dinners)
- The cost of this tour is based on 2 people sharing a room. In cases where there is only one person in a room, that person will pay an additional single supplement.

## ... AND WHAT'S NOT

- Any airport departure taxes
- Excess baggage charges
- Passport and visa fees
- Meals for groups less than 10 travelers
- Meals not listed as included
- Transportation and guide on leisure days
- En route meals, hotels, transportation, and other arrangements
- All drinks except bottled water or soda with meals
- Personal items such as laundry, email, fax, telephone, souvenirs, etc.
- Gratuities for tour guides, site guides and chauffeurs
- Trip cancellation, travel delay, and baggage insurance (Note: This optional coverage is highly recommended and can be purchased through your local insurance company)
- Charges incurred as a result of delays beyond Tourpedia Travel, such as delayed or cancelled flights
- Anything not listed as included



### QUICK TIP...

ENGLISH IS THE OFFICIAL LANGUAGE IN GHANA, BUT GHANAISANS SPEAK OVER 40 LANGUAGES THROUGHOUT ITS 16 REGIONS WITH TWI BEING THE MOST POPULAR, SPOKEN BY ABOUT HALF OF GHANAISANS.



# TERMS & CONDITIONS

Thank you for making the choice to travel with us!

As your Destination Management team, we have the responsibility to secure and guarantee all the services that will be required for your tour. Early confirmation and payment deposits are the best way for us to secure the services your group will need. Please provide and take note of the following:

- Written confirmation (via email) that Tourpedia Travel is chosen to provide ground handling services no later than 15 days after the itinerary and rate are received and agreed to..
- 25% deposit is required to secure hotel and transport reservations to be paid no later than 30 days after submitting a written confirmation.
- 75% percent (remaining balance) is required no later than sixty (60) days prior to the beginning of the tour.
- In cases where Tourpedia Travel provides Airline Tickets, an additional deposit of \$300.00 per person will be required at the time the reservation is made. The deposit will secure the reservation until the stipulated payment deadline.
- Quote will be reviewed 3 months before the group's arrival and you will be notified accordingly of any changes if necessary.

## **Issuance of airline tickets, hotel, meals and transportation voucher**

Issuance of airline tickets and hotel, meals and transportation vouchers (when necessary) will be sent to the group leader five working days after the final payment has been received.

The deposit will be used for the following services:

### **Hotel Reservations**

Hotel reservations are considered provisional (not confirmed) until deposits have been made with the various hotels. A hotel reserves the right to re-sell your rooms if a deposit is not made. Tourpedia Travel therefore requires deposits to have your room (s) secured before your arrival.

If any of the hotels quoted for your choice of package are unable to confirm, we will secure an alternative and available hotel for you. Please note that this may increase or decrease your quote/package depending on the new hotel obtained for you. If it is necessary to choose an alternative hotel, we will inform you prior to making the change.

### **Transportation and Other Services**

Tourpedia Travel also requires a deposit to secure transport and other services that will contribute in making the tour a success. Transportation companies do not consider reservations confirmed until deposits are paid.



# TERMS & CONDITIONS

## **Airline Reservations**

Airlines require a \$300.00 non-refundable deposit per passenger. Balance for the airline is required 60 days after reservations. Airline fares are subject to change without notice. Refunds for the total cost of ticket vary depending on the ticket and the airline's policy. Names for the airline are required 90 days prior to departure. Tickets are non-refundable and name change is not allowed after tickets have been issued. For groups less than 15, tickets will have to be purchased at time of reservation. Tourpedia Travel will not be liable for delays or cancellations due to weather or any other cause beyond the airline's control. In the case where a refund is due, Tourpedia Travel will refund the client when the refund is received from the airline.

## **Cancellation Policy**

We recommend that the tour organizer/ group leader inform the group members of Tourpedia Travel's cancellation policy. All cancellations must be in writing. Land package deposits are fully refundable up to one hundred and twenty (120) days before departure, less \$300.00 administrative fee per person. Cancellations from 119 days and up to 90 days before departure will receive a refund of 50% of the total amount. Cancellations from 89 days and up to 20 days before departure will receive a refund of 15% of the total amount. Cancellations after 20 days prior to departure will not receive a refund.

## **Mode of payment**

Payment must be made by bank/wire transfer or debit/ credit card. Tourpedia Travel's bank transfer information will be provided prior to the deposit due date.

## **Tourpedia Travel's Refund Policy**

When a refund is due for any service, this will be processed within a minimum period of 30 days. All refunds will be based on the refund policy of the vendor: such as hotels, airlines and other service providers.

## **Photography & Videography Policy**

The traveler understands that photographs and videos of Tourpedia Travel's tour activities, experiences and its participants may be used on Tourpedia Travel's social media pages and other marketing channels. By agreeing to the use of Tourpedia Travel as their destination management company, and participating in said activities, the traveler hereby gives consent to the use of the media as specified.

# TOUR CONFIRMATION FORM

ALTON HERITAGE PILGRIMAGE SPECIALLY CURATED FOR SHEILA GOINS

TRAVELER NAME: \_\_\_\_\_

## ROOMING CONFIGURATION

- Single
- Double (1 bed for 2 travelers)
- Twin (2 beds for 2 travelers)

ROOM MATE NAME: \_\_\_\_\_

ANY FOOD ALLERGIES? YES  NO

PLEASE LIST THEM:

_____	_____
_____	_____
_____	_____
_____	_____

Traveling with the possibility of severe allergic reactions or asthma attacks means you need to take additional precautions. If you have an allergy, make sure you visit your doctor before you travel. Your doctor can prescribe a supply of medication for the duration of your travel. If you are at risk of a severe allergic reaction while you are away, carry an adrenaline (epinephrine) injector such as an EpiPen® or Anapen®, for people at risk of anaphylaxis.

Tourpedia Travel requires that people with food allergies and all other allergies are prepared and arrive with the necessary medication to manage the symptoms in case a reaction should occur. They will be required to have, and be responsible for keeping the medication on their person at all times during the tour.

I understand and agree to the terms, conditions and allergy warnings mentioned above.

SIGNED \_\_\_\_\_

DATE \_\_\_\_\_